

Appliance Casters

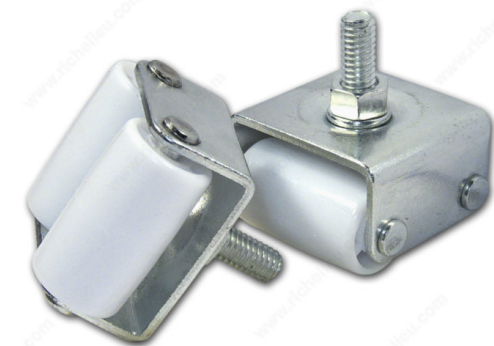
Product # F43560

Packaging format Per unit

DESCRIPTION

Plastic dual wheel

Heavy-duty appliance casters. Add mobility and maneuverability to your appliances with these casters. Four casters per pack. Not recommended for vinyl flooring.



TECHNICAL SPECIFICATIONS

Product #	F43560
Wheel Diameter	22 mm
Load Capacity Per Caster	115 kg
Material	Metal, Plastic
Stem Length	22 mm
Threaded Stem	5/16" - 18 x 7/8"
Recommended Surfaces	Tile/Ceramic/ Linoleum, Hardwood/Laminate
Finish	White, Zinc
Height	30.5 mm
Fastening Type	Fixed
Mounting Type	Threaded Stem
Tread Width	38 mm

IMPORTANT INFORMATION

Not recommended for vinyl flooring.

APPLICATION

For indoor use only.

DISCLAIMER

Technical data subject to change without prior notice.

PRODUCT PHOTOS

